



PRODUCT CATALOGUE

2025/26 EDITION



**NEW ZEALAND'S EXPERTS IN CUSTOM ENGINEERING
AND MANUFACTURING FOR 50 YEARS.**

www.roadrunnerltd.co.nz



**THE TEAM AT
ROADRUNNER
MANUFACTURING HAVE
BEEN NEW ZEALAND'S
EXPERTS IN CUSTOM
ENGINEERING AND
MANUFACTURING
FOR 50 YEARS.**



Based in Bulls, we specialise in manufacturing aluminium, steel and stainless steel ancillary equipment for the transport, marine and agriculture industries and more recently renewable energy component enclosures. Our extensive range of products and solid reputation for quality and service has secured our position as the preferred custom engineering and manufacturing company in New Zealand.

All Roadrunner products are manufactured in our purpose-built workshop and can be shipped throughout New Zealand and internationally.

This product catalogue is a guide to our extensive range of high-quality products, but at Roadrunner, nothing is limited to what's on the shelf. If what you see isn't quite what you're after, simply contact us and we'll be happy to help. We also keep a range of standard stock items on our shelves.

With Roadrunner you are guaranteed to have a product that meets your requirements exactly – from small factory runs, one-offs, to large volume manufacturing, we have you covered.

On our website www.roadrunnerltd.co.nz you can request a quote or place an order. Alternatively, you can contact us at the details below for more information.

info@roadrunnerltd.co.nz
(06) 322 1575

CONTENTS

MEET THE ROADRUNNER TEAM	2
STANDARD STOCK	3
TOOLBOXES	5
Square	
Tapered Front	
HYDRAULIC TANKS	10
Square	
Oval/Square	
Round	
FUEL TANKS	13
Square	
Oval/Square	
Round	
Dangerous Goods	
COMBINATION TANKS	16
Oval/Square	
Round	
Dangerous Goods	
AIR TANKS	20
WATER TANKS	21
REFUELLING TANKS	22
EFFLUENT TANK STORAGE	23
UTE AND SERVICE BOXES	24
DOG BOXES	25
RV STORAGE AND ACCESSORIES	26
ATV/UTV CUSTOM STORAGE	27
POOL COVER BOXES	28
PARTS AND ACCESSORIES	29
BRACKETS AND STRAPS	30
CUSTOM MANUFACTURING + CASE STUDY	32

MEET THE ROADRUNNER TEAM

AT ROADRUNNER WE SPECIALISE IN CUSTOM ENGINEERING AND MANUFACTURING TO MEET YOUR NEEDS AND WE HAVE THE EXPERIENCE IN OUR TEAM TO ENSURE THAT WE CAN DELIVER, EVERY TIME.

Our local, professional fabricators and welders are passionate about what they do and whether it's a small factory run, a standard stocked product or a custom one-off design and build – we will build to your requirements and work hard to ensure the outcome is everything you expected.



NICK WEBSTER – GENERAL MANAGER

Nick has been a part of Roadrunner for over 20 years starting back in 2003 when his apprenticeship began. A hands-on General Manager, Nick's focus is on the manufacturing side of the business and his knowledge of the Roadrunner range of aluminium fabricated and custom-built products is second- to-none.



MATT AVERY – PMT MANAGER

Matt is an engineer by trade with 20+ years' experience behind him, his key focus is running Precision Machine Technology (PMT), our OMAX abrasive waterjet systems company. He has an extensive mechanical knowledge and understanding of OMAX abrasive waterjet operating systems and capabilities which puts him in a great position to assist customers install and get the most out of their machines.



KEIRAN JENKINS – OPERATIONS MANAGER

Keiran has been a part of the Roadrunner team for over seven years, working his way up from the factory floor to sales and production through to his current role as Operations Manager. Keiran's key focus is overseeing all aspects of the manufacturing process, working closely with our team to ensure we continue to deliver our quality products. He is passionate about continuously improving the equipment and systems we have in place to ensure we are delivering top quality products each and every time.



STEVE TUNNICLIFFE – TECHNICAL SALES

Steve has been part of the Roadrunner team for over nine years following a 27-year stint in the automotive industry. Steve's role within the business is dealing with all things manufacturing including communicating quotes, costs and lead times to customers, processing orders, providing job spec sheets/sketches/drawings/costings, and estimated job duration for fabricators, ordering materials and making sure all the guys in the workshop are keeping to deadline.



JEFF COLLINS - SALES REPRESENTATIVE

Jeff started with Roadrunner in 2024 as a Sales Representative. Jeff's role within the business is manufacturing sales and building strong customer relationships. He has years of experience in sales based roles and brings with him a passion for customer service and achieving and delivering the best results for his customers.



STANDARD STOCK

ROADRUNNER MANUFACTURING NOW STOCK STANDARD SIZES ACROSS OUR TOOLBOX, HYDRAULIC TANK, AND WATER TANK PRODUCT RANGES.

To support our customers with quicker turnaround times and availability of stock – we have standard sized stock on our shelves ready for delivery.

Standard Stock Options for Square Toolboxes (3mm Alu)				
PART #	HEIGHT	DEPTH	LENGTH	DOORS
STB900	350mm	400mm	500mm (H)	Single, Stainless Steel
STB901	400mm	500mm	600mm (H)	Single, Stainless Steel
STB902	500mm	500mm	800mm (H)	Single, Stainless Steel
STB003	500mm (H)	500mm	500mm	Single, Stainless Steel
STB222	600mm	600mm	600mm (H)	Single, Stainless Steel
STB905	400mm (H)	500mm	900mm	Double, Stainless Steel
STB102	500mm (H)	500mm	1200mm	Double, Stainless Steel
STB302	600mm (H)	600mm	1200mm	Double, Stainless Steel

(H) Hinge placement.



STB900, STB901 and STB902 Square Toolboxes.



120L and 140L Round Hydraulic Tanks.

Standard Stock Options for Round Hydraulic Tanks*		
PART #	USABLE CAPACITY	DIMENSIONS
SHYTR120F	120 Litres	Ø 635mm x 400mm Long
SHYTR140F	140 Litres	Ø 635mm x 475mm Long

Standard Stock Options for Oval Square Hydraulic Tanks*				
PART #	USABLE CAPACITY	HEIGHT	DEPTH	LENGTH
SHYTO120F	120 Litres	630mm	680mm	340mm
SHYTO140F	140 Litres	630mm	680mm	400mm
SHYTO160F	160 Litres	630mm	680mm	460mm

*Note all Hydraulic Tanks come with a 1¼" BSP Return Line Filter, 1¼" BSP Suction Line Fitting and a Chrome Filler Breather.



120L, 140L and 160L Oval Square Hydraulic Tanks.



Standard Stock Options for Brackets	
PART #	DESCRIPTION
SBHYTR120	Round Hydraulic Tank Bracket and S/S Straps, Ø 635 x 400mm Long
SBHYTR140	Round Hydraulic Tank Bracket and S/S Straps, Ø 635 x 475mm Long
SBHYTO120	Oval Square Single Mount Bracket and S/S Straps, 630H x 680D x 340mm Long
SBHYTO140	Oval Square Single Mount Bracket and S/S Straps, 630H x 680D x 400mm Long
SBHYTO160	Oval Square Single Mount Bracket and S/S Straps, 630H x 680D x 460mm Long

Standard Options for Air Tanks				
PART #	VOLUME	DIAMETER	LENGTH*	PORTS
SAT62	10 Litres	190mm	490mm	3/8" BSP each end, 1/4" BSP Drain
SAT63	25 Litres	266mm	580mm	3/8" BSP LH end, 1 x 3/4" NPT, 1/4" BSP Drain
SAT21	32 Litres	266mm	710mm	3/8" BSP LH end, 1 x 3/4" NPT, 1/4" BSP Drain
SAT20	40 Litres	266mm	860mm	3/8" BSP LH end, 2 x 3/4" NPT, 1/4" BSP Drain
SAT17	42 Litres	266mm	900mm	3/8" BSP each end, 3 x 3/4" NPT, 1/4" BSP Drain
SAT18	47 Litres	300mm	820mm	3/8" BSP each end, 3 x 3/4" NPT, 1/4" BSP Drain
SAT70	50 Litres	350mm	680mm	3/8" BSP each end, 3 x 3/4" NPT, 1/4" BSP Drain

*Note all lengths include Mounting Brackets which are 50mm each end.



40L, 32L and 25L Air Tanks.



SWT-02B Water Tank.

Standard Stock Options for Round Water Tanks				
PART #	DIAMETER	LENGTH	VOLUME	BRACKETS
SWT-01	190mm	440mm	11 Litres	Supplied loose
SWT-02	266mm	325mm	16 Litres	Supplied loose
SWT-02B	266mm	325mm	16 Litres	Welded on Top



CALL US
to find out more or to order
standard stock now!



ROADRUNNER ALUMINIUM TOOLBOXES ARE MANUFACTURED TO SUIT ANY APPLICATION, FROM YOUR TRUCK OR TRAILER TO FIELD SERVICE VEHICLE.

Choose from our extensive range of Toolbox sizes in either the square or tapered front shape, or let us custom make exactly what you need.

STANDARD SPECIFICATIONS

- Manufactured from 3mm or 4mm aluminium
- Continuous aluminium hinge with stainless steel pin
- Sponge door seal
- Lockable stainless steel 'T' Handle latch
- Square toolboxes can have single or double doors that are hinged side, top, or bottom
- Tapered toolboxes are top hinged only

CUSTOM DESIGN OPTIONS

- Different material thickness and size options available
- Aluminium, steel or stainless steel
- Painting, powder coating, signwriting or a complete wrap
- Single, double or multiple door options
- Treadplate options
- Hinges - weld on or continuous 'B' hinge
- Latches - S/S T-Handle (lockable), trigger flush lock or anti-luce
- Door supports – gas stays, chains or wire rope
- Shelves, pull out drawers, partitions

BENEFITS OF A ROADRUNNER TOOLBOX

Hinge weight: Equal weight supports the door which spreads the weight of the door over the entire hinge, as opposed to two hinges being overloaded with weight. This protects the structural integrity of the door and the longevity of your asset.

Water resistant: All boxes are designed and manufactured here and are specific to New Zealand road and weather conditions.

Custom-design: The option to customise means that instead of trying to make a standard product work to your needs and having to compromise on some of them, you can have a product that solves your problems and meets your specs.

Virtually indestructible: They have been individually tested and road-tested for New Zealand conditions.

Stock availability: As a rule, our most popular products are held in stock or are available overnight.

Value-add: Choosing a robust, durable, New Zealand made product might enable you to hold on price for longer in terms of vehicle value or add to the sale value or sale leverage down the line.



Double Door Toolbox.

Get a quote or place order:
[www.roadrunnerltd.co.nz](http://www.roadrunnerltd.co.nz/shop/toolboxes)
[/shop/toolboxes](http://www.roadrunnerltd.co.nz/shop/toolboxes)

Toolbox Size: 500H x 500D; Length 500mm

PART #		BODY	DOOR	DETAILS
SQUARE	TAPERED			
TB001	TB600 (T)	3mm	Alu	Single door; Hinge top, bottom or side.
TB003	TB602 (T)	3mm	S/S	Single door; Hinge top, bottom or side.
TB005	TB604 (T)	4mm	Alu	Single door; Hinge top, bottom or side.
TB007	TB606 (T)	4mm	S/S	Single door; Hinge top, bottom or side.

(T) Top hinged only

Toolbox Size: 500H x 500D; Length 600mm

PART #		BODY	DOOR	DETAILS
SQUARE	TAPERED			
TB020	TB620 (T)	3mm	Alu	Single door; Hinge top, bottom or side.
TB022	TB622 (T)	3mm	S/S	Single door; Hinge top, bottom or side.
TB024	TB624 (T)	4mm	Alu	Single door; Hinge top, bottom or side.
TB026	TB626 (T)	4mm	S/S	Single door; Hinge top, bottom or side.

(T) Top hinged only



Square Single Door Toolboxes.



Tapered Front Toolbox.



Square Double Door Toolbox.

Toolbox Size: 500H x 500D; Length 900mm

PART #		BODY	DOOR	DETAILS
SQUARE	TAPERED			
TB040	TB640 (T)	3mm	Alu	Single door; Hinge top or bottom.
TB042	TB642 (T)	3mm	S/S	Single door; Hinge top or bottom.
TB044	TB644 (T)	4mm	Alu	Single door; Hinge top or bottom.
TB046	TB646 (T)	4mm	S/S	Single door; Hinge top or bottom.
TB060	N/A	3mm	Alu	Double doors; Hinge left & right.
TB062	N/A	3mm	S/S	Double doors; Hinge left & right.
TB064	N/A	4mm	Alu	Double doors; Hinge left & right.
TB066	N/A	4mm	S/S	Double doors; Hinge left & right.

(T) Top hinged only

Toolbox Size: 500H x 500D; Length 1200mm

PART #		BODY	DOOR	DETAILS
SQUARE	TAPERED			
TB080	TB660 (T)	3mm	Alu	Single door; Hinge top or bottom.
TB082	TB662 (T)	3mm	S/S	Single door; Hinge top or bottom.
TB084	TB664 (T)	4mm	Alu	Single door; Hinge top or bottom.
TB086	TB666 (T)	4mm	S/S	Single door; Hinge top or bottom.
TB100	N/A	3mm	Alu	Double doors; Hinge left & right.
TB102	N/A	3mm	S/S	Double doors; Hinge left & right.
TB104	N/A	4mm	Alu	Double doors; Hinge left & right.
TB106	N/A	4mm	S/S	Double doors; Hinge left & right.

(T) Top hinged only

Toolbox Size: 500H x 500D; Length 1500mm

PART #		BODY	DOOR	DETAILS
SQUARE	TAPERED			
TB120	N/A	3mm	Alu	Single door; Hinge top or bottom.
TB122	N/A	3mm	S/S	Single door; Hinge top or bottom.
TB124	N/A	4mm	Alu	Single door; Hinge top or bottom.
TB126	N/A	4mm	S/S	Single door; Hinge top or bottom.
TB140	N/A	3mm	Alu	Double doors; Hinge left & right.
TB142	N/A	3mm	S/S	Double doors; Hinge left & right.
TB144	N/A	4mm	Alu	Double doors; Hinge left & right.
TB146	N/A	4mm	S/S	Double doors; Hinge left & right.

Toolbox Size: 600H x 600D; Length 500mm				
PART #		BODY	DOOR	DETAILS
SQUARE	TAPERED			
TB200	TB800 (T)	3mm	Alu	Single door; Hinge top, bottom or side.
TB202	TB802 (T)	3mm	S/S	Single door; Hinge top, bottom or side.
TB204	TB804 (T)	4mm	Alu	Single door; Hinge top, bottom or side.
TB206	TB806 (T)	4mm	S/S	Single door; Hinge top, bottom or side.

(T) Top hinged only

Toolbox Size: 600H x 600D; Length 600mm				
PART #		BODY	DOOR	DETAILS
SQUARE	TAPERED			
TB220	TB820 (T)	3mm	Alu	Single door; Hinge top, bottom or side.
TB222	TB822 (T)	3mm	S/S	Single door; Hinge top, bottom or side.
TB224	TB824 (T)	4mm	Alu	Single door; Hinge top, bottom or side.
TB226	TB826 (T)	4mm	S/S	Single door; Hinge top, bottom or side.

(T) Top hinged only

Toolbox Size: 600H x 600D; Length 900mm				
PART #		BODY	DOOR	DETAILS
SQUARE	TAPERED			
TB240	TB840 (T)	3mm	Alu	Single door; Hinge top or bottom.
TB242	TB842 (T)	3mm	S/S	Single door; Hinge top or bottom.
TB244	TB844 (T)	4mm	Alu	Single door; Hinge top or bottom.
TB246	TB846 (T)	4mm	S/S	Single door; Hinge top or bottom.
TB260	N/A	3mm	Alu	Double doors; Hinge left & right.
TB262	N/A	3mm	S/S	Double doors; Hinge left & right.
TB264	N/A	4mm	Alu	Double doors; Hinge left & right.
TB266	N/A	4mm	S/S	Double doors; Hinge left & right.

(T) Top hinged only

Toolbox Size: 600H x 600D; Length 1200mm				
PART #		BODY	DOOR	DETAILS
SQUARE	TAPERED			
TB280	TB860 (T)	3mm	Alu	Single door; Hinge top or bottom.
TB282	TB862 (T)	3mm	S/S	Single door; Hinge top or bottom.
TB284	TB864 (T)	4mm	Alu	Single door; Hinge top or bottom.
TB286	TB866 (T)	4mm	S/S	Single door; Hinge top or bottom.
TB300	N/A	3mm	Alu	Double doors; Hinge left & right.
TB302	N/A	3mm	S/S	Double doors; Hinge left & right.
TB304	N/A	4mm	Alu	Double doors; Hinge left & right.
TB306	N/A	4mm	S/S	Double doors; Hinge left & right.

(T) Top hinged only



Custom Square Toolbox with single door.



Double Door Toolbox.

Toolbox Size: 600H x 600D; Length 1300mm				
PART #		BODY	DOOR	DETAILS
SQUARE	TAPERED			
TB310	N/A	4mm	Alu	Single door. Hinge top or bottom
TB312	N/A	4mm	S/S	Single door. Hinge top or bottom
TB314	N/A	4mm	Alu	Double doors. Hinge left & right
TB316	N/A	4mm	S/S	Double doors. Hinge left & right
TB317	N/A	3mm	Alu	Double doors. Hinge left & right
TB318	N/A	3mm	S/S	Double doors. Hinge left & right

Toolbox Size: 600H x 600D; Length 1500mm				
PART #		BODY	DOOR	DETAILS
SQUARE	TAPERED			
TB320	TB880 (T)	3mm	Alu	Single door; Hinge top or bottom.
TB322	TB882 (T)	3mm	S/S	Single door; Hinge top or bottom.
TB324	TB884 (T)	4mm	Alu	Single door; Hinge top or bottom.
TB326	TB886 (T)	4mm	S/S	Single door; Hinge top or bottom.
TB340	N/A	3mm	Alu	Double doors; Hinge left & right.
TB342	N/A	3mm	S/S	Double doors; Hinge left & right.
TB344	N/A	4mm	Alu	Double doors; Hinge left & right.
TB346	N/A	4mm	S/S	Double doors; Hinge left & right.

(T) Top hinged only

Toolbox Accessories Door Supports	
Door Supports are recommended for all top and bottom hinged toolboxes.	
PART #	DETAILS
TB-CHAIN-ALU	2x Support Chains to Alu Door
TB-CHAIN-S/S	2x Support Chains to S/S Door
TB-GS	2x Adjustable Gas Stays
TB-GS1	1x Adjustable Gas Stay
WR-ASS-ALU	1x Toolbox Wire Rope Alu Door Stay
WR-ASS-S/S	1x Toolbox Wire Rope S/S Door Stay

Toolbox Accessories Shelf Options	
PART #	DETAILS
TB-SHELF	Toolbox Shelf - 0-600mm Long
TB-SHELF1	Toolbox Shelf - 601-1200mm Long
TB-SHELF2	Toolbox Shelf - 1201-1500mm Long

HYDRAULIC TANKS



ROADRUNNER ALUMINIUM HYDRAULIC TANKS ARE MADE TO ORDER IN ROUND, SQUARE, AND OVAL/SQUARE VARIATIONS, IN A WIDE RANGE OF SIZES.

As with all Roadrunner products, our Hydraulic Tank sizing specifications are a guide only. If they don't suit your needs, we are happy to help design and custom build an aluminium hydraulic tank that does.

SPECIFICATIONS

- Available with or without 1 ¼" tank top return line filter
- 1 ¼", 1 ½" or 2" BSP suction line fitting
- 1 ¼", 1 ½" or 2" BSP return line boss and diffuser (without filter)
- Chrome filler breather
- Round and oval/square tanks manufactured from 3mm aluminium
- Square tanks manufactured from 4mm aluminium

TANK MOUNTING BRACKETS AND STRAPS MANUFACTURED TO SUIT

- Brackets are manufactured from 6mm mild steel
- Brackets are supplied loose in primed grey
- Straps are manufactured from 3mm polished stainless steel

ADDITIONAL OPTIONS

- Tube type sight glass
- 5" level temperature sight glass
- Different size filters available on request
- Tapered front
- Locking chrome or non-locking alloy Filler Breathers

BENEFITS OF A ROADRUNNER HYDRAULIC TANK

Designed for New Zealand conditions: All our tanks are designed and manufactured here and are specific to New Zealand road and weather conditions.

Easy replication of damaged tanks: Tanks can get damaged on trucks from wear and tear or because of general usage/accidents. It can be costly because of time and import associated fees to have to replace them from overseas importers. Roadrunner can easily replicate and turnaround a replacement tank to exactly match the original.

Traceable: We can trace the production and journey of every product which means customers are assured with complete visibility. They won't have to deal with offshore importers and have less visibility as to where they are in the process.

Proven track record: Many tanks – especially imported ones – are not designed for New Zealand conditions and therefore face the risk of cracking, getting easily damaged or coming loose. Our process involves testing for these conditions and our one year warranty underpins that we believe in the longevity of our products.

Get a quote or place order:

[www.roadrunnerltd.co.nz
/shop/hydraulic-tanks](http://www.roadrunnerltd.co.nz/shop/hydraulic-tanks)

Square Hydraulic Tanks

PART #		USABLE CAPACITY	DIMENSIONS
WITH FILTER	WITHOUT FILTER		
HYTS80	HYTS80NF	80L	600D x 500H x 300mm Long
HYTS100	HYTS100NF	100L	600D x 500H x 400mm Long
HYTS120	HYTS120NF	120L	600D x 500H x 450mm Long
HYTS140	HYTS140NF	140L	600D x 500H x 500mm Long
HYTS160	HYTS160NF	160L	600D x 500H x 550mm Long
HYTS200	HYTS200NF	200L	600D x 600H x 600mm Long



Square Hydraulic Tanks with single mount brackets and stainless steel straps.

Note: Brackets sold separately

Oval/Square Hydraulic Tanks

PART #		USEABLE CAPACITY	DIMENSIONS
WITH FILTER	WITHOUT FILTER		
HYTO100F	N/A	108L	630H x 680D x 320mm Long
N/A	HYTO100NF	100L	630H x 680D x 300mm Long
HYTO100F1	N/A	108L	680H x 630D x 320mm Long
N/A	HYTO100NF1	100L	680H x 630D x 300mm Long
HYTO120F	HYTO120NF	120L	630H x 680D x 340mm Long
HYTO120F1	HYTO120NF1	120L	680H x 630D x 340mm Long
HYTO140F	HYTO140NF	140L	630H x 680D x 400mm Long
HYTO140F1	HYTO140NF1	140L	680H x 630D x 400mm Long
HYTO160F	HYTO160NF	160L	630H x 680D x 460mm Long
HYTO160F1	HYTO160NF1	160L	680H x 630D x 460mm Long
HYTO200F	HYTO200NF	200L	630H x 680D x 560mm Long
HYTO200F1	HYTO200NF1	200L	680H x 630D x 560mm Long



Oval Square Hydraulic Tanks with single mount brackets and stainless steel straps.

Note: Brackets sold separately

Round Hydraulic Tanks			
PART #		USEABLE CAPACITY	DIMENSIONS
WITH FILTER	WITHOUT FILTER		
N/A	HYTR80NF	80L	Ø 635 x 300mm Long
HYTR100F	HYTR100NF	100L	Ø 635 x 350mm Long
HYTR120F	HYTR120NF	120L	Ø 635 x 400mm Long
HYTR140F	HYTR140NF	140L	Ø 635 x 475mm Long
HYTR160F	HYTR160NF	160L	Ø 635 x 550mm Long
HYTR200F	HYTR200NF	200L	Ø 635 x 675mm Long



Round Hydraulic Tanks with single mount brackets and stainless steel straps.



Round Hydraulic Tank with two brackets.

Oval Square Hydraulic Tank with two brackets.

Square Hydraulic Tank with two brackets.



Custom Hydrualic Tank.

Custom 300L Hydraulic Tank with two brackets.

Custom Hydraulic Tank with sight glass.

Note: Brackets sold separately

FUEL TANKS



ROADRUNNER ALUMINIUM FUEL TANKS ARE MADE TO ORDER IN ROUND, SQUARE, AND OVAL/SQUARE VARIATIONS AND COME IN A WIDE RANGE OF SIZES.

As with all Roadrunner products, our Fuel Tank sizing specifications are a guide only. If they don't suit your needs, we are happy to help design and custom build a fuel tank that does.

SPECIFICATIONS

- Round and oval/square tanks manufactured from 3mm aluminium
- Square tanks manufactured from 4mm aluminium
- Dangerous goods tanks manufactured from 5mm aluminium
- Roadrunner steel insert filler neck and aluminium fuel cap
- Internal fuel surge baffles
- Sender mounting plate to suit existing sender
- Breather, 3/8" drain boss and plug

TANK MOUNTING BRACKETS AND STRAPS MANUFACTURED TO SUIT

- Brackets are manufactured from 6mm mild steel
- Brackets are supplied loose in primed grey
- Straps are manufactured from 3mm polished stainless steel

ADDITIONAL OPTIONS

- Locking or non-locking fuel caps in alloy or plastic
- Anti-roll bars
- Pick up pipes

BENEFITS OF A ROADRUNNER FUEL TANK

Individual testing: Tank testing is important to us because it gives us the peace of mind that every single piece we create has met our own internal quality assurance standards which means we are able to pass them onto you.

Added internal baffling: Means that our tanks can support fuel saving and help you to manage on-road costs with more predictability and consistency.

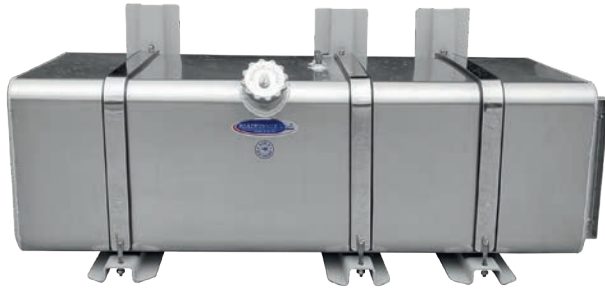
Thicker aluminium: Thicker grade aluminium means a stronger, more durable product that is less likely to dent/scuff or damage.



Oval Square Fuel Tank with grey brackets and stainless steel straps.

Get a quote or place order:
[www.roadrunnerltd.co.nz](http://www.roadrunnerltd.co.nz/shop/fuel-tanks)
[/shop/fuel-tanks](http://www.roadrunnerltd.co.nz/shop/fuel-tanks)

Square Fuel Tanks			
PART #		USABLE CAPACITY	DIMENSIONS
WITH VDO	WITH PICK UP PIPES		
FT130SQ	FT130PSQ	130L	482H x 482D x 610mm Long
FT196SQ	FT196PSQ	196L	405H x 520D x 1015mm Long
FT240SQ	FT240PSQ	240L	405H x 520D x 1240mm Long
FT308SQ	FT308PSQ	308L	520H x 520D x 1240mm Long
FT360SQ	FT360PSQ	360L	520H x 610D x 1240mm Long
FT400SQ	FT400PSQ	400L	570H x 730D x 1000mm Long
FT425SQ	FT425PSQ	425L	610H x 610D x 1240mm Long
FT500SQ	FT500PSQ	500L	650H x 600D x 1350mm Long



Square Fuel Tank with primed brackets and stainless steel straps.

Note: Brackets sold separately

Oval Square Fuel Tanks			
PART #		USABLE CAPACITY	DIMENSIONS
WITH VDO	WITH PICK UP PIPES		
FT100-OSQ	FT100P-OSQ	100L	630H x 680D x 300mm Long
FT100-OSQ1	FT100P-OSQ1	100L	680H x 630D x 300mm Long
FT450-OSQ	FT450P-OSQ	450L	630H x 680D x 1240mm Long
FT450-OSQ1	FT450P-OSQ1	450L	680H x 630D x 1240mm Long
FT470-OSQ	FT470P-OSQ	470L	650H x 700D x 1240mm Long
FT470-OSQ1	FT470P-OSQ1	470L	700H x 650D x 1240mm Long
FT500-OSQ	FT500P-OSQ	500L	630H x 680D x 1400mm Long
FT500-OSQ1	FT500P-OSQ1	500L	680H x 630D x 1400mm Long
FT530-OSQ	FT530P-OSQ	530L	650H x 700D x 1400mm Long
FT530-OSQ1	FT530P-OSQ1	530L	700H x 650D x 1400mm Long

Round Fuel Tanks			
PART #		USABLE CAPACITY	DIMENSIONS
WITH VDO	WITH PICK UP PIPES		
FT130RO	FT130PRO	130L	Ø 380 x 1240mm Long
FT190RO	FT190PRO	190L	Ø 460 x 1240mm Long
FT290RO	FT290PRO	290L	Ø 570 x 1240mm Long
FT360RO	FT360PRO	360L	Ø 635 x 1240mm Long
FT390RO	FT390PRO	390L	Ø 660 x 1240mm Long
FT444RO	FT444PRO	444L	Ø 635 x 1540mm Long
FT450RO	FT450PRO	450L	Ø 710 x 1240mm Long
FT480RO	FT480PRO	480L	Ø 660 x 1540mm Long
FT560RO	N/A	560L	Ø 710 x 1540mm Long



Round Fuel Tank without brackets or straps.

Note: Brackets sold separately

Dangerous Goods Fuel Tanks*			
PART #		USABLE CAPACITY	DIMENSIONS
WITH VDO	WITH PICK UP PIPES		
FT190DAN	FT190PDAN	190L	Ø 460 x 1240mm Long
FT360DAN	N/A	360L	Ø 635 x 1240mm Long
FT390DAN	FT390PDAN	390L	Ø 660 x 1240mm Long
FT450DAN	N/A	450L	Ø 710 x 1240mm Long
FT480DAN	FT480PDAN	480L	Ø 660 x 1540mm Long

*Dangerous goods tanks are constructed to meet the New Zealand Tank Wagon Code and LPG Tank Wagon Code.

COMBINATION TANKS



ROADRUNNER ALUMINIUM COMBINATION FUEL/OIL TANKS ARE MADE TO ORDER IN ROUND AND OVAL/SQUARE VARIATIONS, IN A WIDE RANGE OF SIZES.

As with all Roadrunner products, our Combination Tank sizing specifications are a guide only. If they don't suit your needs, we are happy to help design and custom build a combination tank that does.

SPECIFICATIONS

- Split to your fuel/oil volume requirements
- Double baffles between fuel/oil tank
- Available with or without 1 ¼" tank top return line filter
- 1 ¼", 1 ½" or 2" BSP suction line fitting
- 1 ¼", 1 ½" or 2" BSP return line boss and diffuser (without filter)
- Chrome filler breather
- Standard tanks manufactured from 3mm aluminium
- Dangerous goods tanks manufactured from 5mm aluminium
- Internal fuel surge baffles
- Fuel gauge sender plate to suit chassis
- Breather, 3/8" drain boss and plug

TANK MOUNTING BRACKETS AND STRAPS MANUFACTURED TO SUIT

- Brackets are manufactured from 6mm mild steel
- Brackets are supplied loose in primed grey
- Straps are manufactured from 3mm polished stainless steel

ADDITIONAL OPTIONS

- Tube type sight glass
- 5" level temperature sight glass
- Different size filters available on request
- Locking or non-locking fuel caps in alloy or plastic
- Remote mount return line filter
- Locking chrome or non-locking alloy Filler Breathers

BENEFITS OF A ROADRUNNER COMBINATION TANK

Proven track record: Many tanks – especially imported ones – are not designed for New Zealand conditions and therefore face the risk of cracking, getting easily damaged or coming loose.

Internal baffling designed for application and strength: Internal baffling means added strength and liquid stability when on the move or traversing New Zealand's unique landscapes.

Added chassis room from combining two tanks: This additional space – a design bonus because of combining tanks – means that our customers have more flexibility with their design.

Weight saving due to less brackets: Using less brackets will positively impact costs and durability and we think that is a real benefit (that many aren't aware of until we advise them).

Double baffling: Investing in our tanks means that customers are assured of an extra layer of protection for their fleet and their drivers.

Get a quote or place order:
[www.roadrunnerltd.co.nz](http://www.roadrunnerltd.co.nz/shop/combination-tanks)
[/shop/combination-tanks](http://www.roadrunnerltd.co.nz/shop/combination-tanks)

Oval Square Combination Tanks with VDO & No Pick Up Pipes

PART #		USABLE CAPACITY*	DIMENSIONS
WITH FILTER	WITHOUT FILTER		
FT440COM-F	FT440COM-NF	440L	630H x 680D x 1240mm Long
FT440COM-F1	FT440COM-NF1	440L	680H x 630D x 1240mm Long
FT460COM-F	FT460COM-NF	460L	650H x 700D x 1240mm Long
FT460COM-F1	FT460COM-NF1	460L	700H x 650D x 1240mm Long
FT515COM-F	FT515COM-NF	515L	630H x 680D x 1400mm Long
FT515COM-F1	FT515COM-NF1	515L	680H x 630D x 1400mm Long
FT530COM-F	FT530COM-NF	530L	650H x 700D x 1400mm Long
FT530COM-F1	FT530COM-NF1	530L	700H x 650D x 1400mm Long

Oval Square Combination Tanks with Pick Up Pipes & No VDO

PART #		USABLE CAPACITY*	DIMENSIONS
WITH FILTER	WITHOUT FILTER		
FT440COMP-F	FT440COMP-NF	440L	630H x 680D x 1240mm Long
FT440COMP-F1	FT440COMP-NF1	440L	680H x 630D x 1240mm Long
FT460COMP-F	FT460COMP-NF	460L	650H x 700D x 1240mm Long
FT460COMP-F1	FT460COMP-NF1	460L	700H x 650D x 1240mm Long
FT515COMP-F	FT515COMP-NF	515L	630H x 680D x 1400mm Long
FT515COMP-F1	FT515COMP-NF1	515L	680H x 630D x 1400mm Long
FT530COMP-F	FT530COMP-NF	530L	650H x 700D x 1400mm Long
FT530COMP-F1	FT530COMP-NF1	530L	700H x 650D x 1400mm Long

*Total volume of fuel and oil combined.



Oval Square Combination Tank with VDO, grey brackets and stainless steel straps.



Oval Square Combination tank with pick up pipes grey brackets and stainless steel straps.

Note: Brackets sold separately

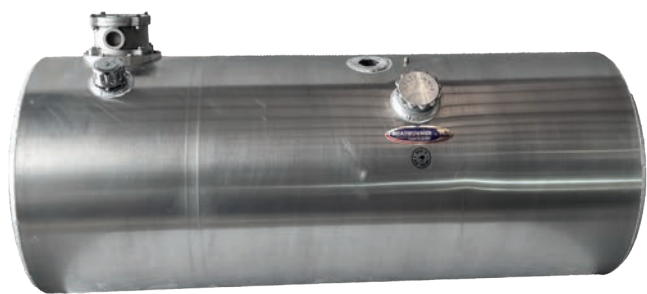
Round Combination Tanks with VDO & No Pick Up Pipes			
PART #		USABLE CAPACITY*	DIMENSIONS
WITH FILTER	WITHOUT FILTER		
FT180COM-F	FT180COM-NF	180L	Ø 460 x 1240mm Long
FT270COM-F	FT270COM-NF	270L	Ø 570 x 1240mm Long
FT345COM-F	FT345COM-NF	345L	Ø 635 x 1240mm Long
FT360COM-F	N/A	360L	Ø 570 x 1540mm Long
FT375COM-F	FT375COM-NF	375L	Ø 660 x 1240mm Long
FT430COM-F	FT430COM-NF	430L	Ø 635 x 1540mm Long
FT450COM-F	FT450COM-NF	450L	Ø 710 x 1240mm Long
FT470COM-F	FT470COM-NF	470L	Ø 660 x 1540mm Long
FT550COM-F	FT550COM-NF	550L	Ø 710 x 1540mm Long

Round Combination Tanks with Pick Up Pipes & No VDO			
PART #		USABLE CAPACITY*	DIMENSIONS
WITH FILTER	WITHOUT FILTER		
FT345COMP-F	FT345COMP-NF	345L	Ø 635 x 1240mm Long
FT430COMP-F	FT430COMP-NF	430L	Ø 635 x 1540mm Long
FT550COMP-F	N/A	550L	Ø 710 x 1540mm Long

*Total volume of fuel and oil combined.



Round Combination Tank with pick up pipes



Round Combination Tank with VDO

Note: Brackets sold separately

Dangerous Goods Combination Tanks with Pick Up Pipes & No VDO**

PART #		USABLE CAPACITY*	DIMENSIONS
WITH FILTER	WITHOUT FILTER		
FT410COMDP-F	N/A	410L	Ø 660 x 1350 mm Long
FT470COMDP-F	N/A	470L	Ø 660 x 1540 mm Long

*Total volume of fuel and oil combined.

**Dangerous goods tanks are constructed to meet the New Zealand Tank Wagon Code and LPG Tank Wagon Code.

Dangerous Goods Combination Tanks with VDO & No Pick Up Pipes**

PART #		USABLE CAPACITY*	DIMENSIONS
WITH FILTER	WITHOUT FILTER		
N/A	FT270COMD-NF	270L	Ø 570 x 1240 mm Long
FT345COMD-F	FT345COMD-NF	345L	Ø 635 x 1240 mm Long
FT375COMD-F	FT375COMD-NF	375L	Ø 660 x 1240 mm Long
FT410COMD-F	N/A	410L	Ø 660 x 1350 mm Long
FT450COMD-F	FT450COMD-NF	450L	Ø 710 x 1240 mm Long
FT470COMD-F	N/A	470L	Ø 660 x 1540 mm Long



Customised Combination Tanks.

Custom Combination Tank in primed Cradle Bracket.

Note: Brackets sold separately

AIR TANKS



ROADRUNNER ALUMINIUM AIR TANKS COMPLY WITH SAE J10 AND HAVE A RATED WORKING PRESSURE OF 160PSI/11BAR.

Our Air Tanks range from 10 to 50 litres. If this sizing doesn't suit your needs, we are happy to help design and custom build an aluminium air tank that does.

BENEFITS OF A ROADRUNNER AIR TANK

Quality control: Customers have the assurance that their air tanks meet compliance requirements and are safe to use. This means they have peace of mind around their purchase decision and can easily demonstrate value for money. They know they will not have to replace the product due to integrity concerns or faults.

Easy replication: Tanks can get damaged on trucks because of general usage/accidents. It can be costly because of time and import associated fees to have to replace them from overseas importers.



Round Air Tank with brackets.

Roadrunner can easily replicate and turnaround a replacement tank to exactly match the original.

Safety assurance: Roadrunner air tanks are unique in the way that they control and support the brake system. This extra check and balance provides customers with an extra layer of reassurance around the performance of their tank and their truck. The design is complementary to what the truck braking system needs and will work in balance with it.



Air Tank Specifications

PART #	VOLUME	DIAMETER	LENGTH*	PORTS
AT62	10 Litres	190mm	490mm	3/8" BSP each end, 1/4" BSP Drain
AT63	25 Litres	266mm	580mm	3/8" BSP LH end, 1 x 3/4" NPT, 1/4" BSP Drain
AT21	32 Litres	266mm	710mm	3/8" BSP LH end, 1 x 3/4" NPT, 1/4" BSP Drain
AT20	40 Litres	266mm	860mm	3/8" BSP LH end, 2 x 3/4" NPT, 1/4" BSP Drain
AT17	42 Litres	266mm	900mm	3/8" BSP each end, 3 x 3/4" NPT, 1/4" BSP Drain
AT18	47 Litres	300mm	820mm	3/8" BSP each end, 3 x 3/4" NPT, 1/4" BSP Drain
AT70	50 Litres	350mm	680mm	3/8" BSP each end, 3 x 3/4" NPT, 1/4" BSP Drain

*Note all lengths include mounting brackets which are 50mm each end.

Get a quote or place order:
[www.roadrunnerltd.co.nz](http://www.roadrunnerltd.co.nz/shop/air-tanks)
[/shop/air-tanks](http://www.roadrunnerltd.co.nz/shop/air-tanks)



WATER TANKS

ROADRUNNER CAN CUSTOM MANUFACTURE WATER TANKS TO SUIT YOUR NEEDS INCLUDING HAND WASH TANKS, STAINLESS STEEL DRINKING WATER TANKS AND LARGE VOLUME WATER TANKS UP TO 5,000 LITRES.

If our Water Tank sizing doesn't suit your needs, we are happy to help design and custom build an aluminium water tank that does.

BENEFITS OF A ROADRUNNER WATER TANK

Sanitary: Our water tanks mean customers have access to clean water and sanitation options wherever they are. They provide hassle-free access to clean water.

Light weight: Aluminium tanks are lighter and more durable than their plastic alternatives. They also have less environmental impact.

Affordable: People are often surprised by how affordable our water tanks are. They are often cheaper than plastic alternatives and - in addition - will likely last longer.

Water Tank Specifications*

PART #	DIAMETER	VOLUME	LENGTH
WT-01	190mm	11 Litres	440mm
WT-02	266mm	16 Litres	325mm
WT-03	266mm	20 Litres	400mm
WT-04	266mm	25 Litres	500mm

*Note all water tanks have brackets supplied loose.



Under deck mounted Water Tank WT-02.



Customised Water Tank.



WT-02 & WT-01 Water Tanks.

Get a quote or place order:
[www.roadrunnerltd.co.nz](http://www.roadrunnerltd.co.nz/shop/water-tanks)
[/shop/water-tanks](http://www.roadrunnerltd.co.nz/shop/water-tanks)

REFUELLING TANKS



ROADRUNNER REFUELLING TANKS ARE MANUFACTURED TO SUIT ANY APPLICATION AND ARE ENGINEERED FOR NEW ZEALAND ROAD CONDITIONS. WE CAN CUSTOM DESIGN THEM TO FIT ANY SPACE OR LOCATION ON YOUR TRUCK.

Roadrunner Refuelling Tanks are manufactured from 4mm aluminium and have a multitude of applications from; backs of utes, trailers and even slung under helicopters just to name a few. Our experienced craftsmanship ensures they are made to exceed the conditions they will be used in. A wide range of pump and accessory options from pump sizes and nozzle options coupled with a 4m delivery hose guarantees you are never let down in a sticky situation.

STANDARD SPECIFICATIONS

- Manufactured from 4mm aluminium
- 4m hose auto nozzle

ADDITIONAL OPTIONS

- Remote mount
- With or without clear bowl filter

BENEFITS OF A ROADRUNNER REFUELLING TANK

Flexible design: Our refuelling tanks are custom designed and can be made to fit unique spaces. They will fit wherever you need them to fit.

Match your existing profile: Roadrunner refuelling tanks can be made to match your existing vehicle profile to ensure a seamless aesthetic.

Customise your literage: This means that instead of trying to make a standard refuelling tank work to your needs you can have a product that meets your specific literage requirements.

Designed for New Zealand conditions: All our refuelling tanks are designed and manufactured here and are specific to New Zealand road and weather conditions.



Get a quote or place order:
[www.roadrunnerltd.co.nz](http://www.roadrunnerltd.co.nz/custom-manufacturing/refuelling-tanks)
[/custom-manufacturing/refuelling-tanks](http://www.roadrunnerltd.co.nz/custom-manufacturing/refuelling-tanks)

EFFLUENT TANK STORAGE



OUR TANKS ARE MANUFACTURED TO SUIT ANY APPLICATION AND ENGINEERED FOR NEW ZEALAND ROAD CONDITIONS. WE CAN CUSTOM DESIGN THEM TO FIT IN ANY SPACE OR LOCATION ON YOUR TRUCK.

Roadrunner tanks will meet standard design requirements as well as compliance requirements. Using one of our tanks means you can relax knowing that they will not leak or spill and that they are robust and load-bearing.

As custom engineering and manufacturing experts, Roadrunner Manufacturing can create both standard and custom effluent tanks. Each effluent tank can be created to your desired shape, size, and available space.

SPECIFICATION OPTIONS:

- 4mm or 5mm aluminium
- Shapes – any size
- Baffles
- Port locations and outlets customisable to your design
- Effluent valves (Jackson's and McKee's)
- Inspection hatches
- Mounting options to suit your design
- Pressure tested

Roadrunner Manufacturing are custom engineering experts. Whatever your needs, we can design a result to suit your requirements.



BENEFITS OF A ROADRUNNER EFFLUENT STORAGE TANK

Flexible design: Our tanks are custom designed and can be made to fit unique spaces. They will fit whenever you need them to fit.

They are hassle-free: You have the reassurance that our tanks will meet standard design (value) requirements as well as compliance requirements.

Designed for New Zealand conditions: All our tanks are designed and manufactured here and are specific to New Zealand road and weather conditions. They are durable and robust.

Easy replication: Tanks can get damaged on trucks due to general usage or accidents. It can be costly to replace them with overseas importers. Roadrunner Manufacturing can easily replicate and turnaround a replacement tank to exactly match the original.



Get a quote or place order:

www.roadrunnerltd.co.nz

[/custom-manufacturing/effluent-storage-tanks](http://www.roadrunnerltd.co.nz/custom-manufacturing/effluent-storage-tanks)

UTE & SERVICE BOXES



OUR SERVICE BOXES ARE CREATED TO SUIT THE SIZE OF YOUR TRUCK, UTE OR VAN AND ARE PURPOSE-DESIGNED TO SUIT YOUR APPLICATION.

AS EXPERTS IN CUSTOM ENGINEERING AND MANUFACTURING, ROADRUNNER CAN DESIGN AND BUILD:

- Ute canopies
- Flat decks
- Service boxes
- Service vehicle fit out's

Custom-design service boxes we have manufactured historically have also featured a range of design elements you may wish to consider including:

- Look through windows
- Built-in refueller
- Gull wing doors that open with gas stays
- Roller doors
- Hose reel
- Pump kit
- Powder coated

Our team also offers custom-made toolboxes for secure storage on your ute or truck.

BENEFITS OF A ROADRUNNER UTE AND SERVICE BOX

Secure and safe: All our service boxes are secure and have key lockable latches as part of the package at no extra cost.

Multiple design and storage options: The option to customise means that customers have the ability to design a product from scratch that meets their specs, solves their challenges and creates opportunities (instead of having to try to make a standard off-the-shelf product deliver for them).

Designed for New Zealand conditions: All our boxes are designed and manufactured here and are specific to New Zealand road and weather conditions. They are durable and robust and built to outlast them.

“ The team worked with my drawing and designed us a new service body which was completely custom designed and built. They were the only ones prepared to do this. They made it so easy to work with them. I told them upfront I needed it to work, to be robust and not to leak. They are a nice down to earth crew and immediately I trusted them with the job. Plus, this toolbox is so robust it will outlast this ute and be transferred to my next one. It's definitely future-proofed my investment! ”

Blair Adamson, Logweld Ltd

Get a quote or place order:
[www.roadrunnerltd.co.nz](http://www.roadrunnerltd.co.nz/custom-manufacturing/ute-boxes)
[/custom-manufacturing/ute-boxes](http://www.roadrunnerltd.co.nz/custom-manufacturing/ute-boxes)



DOG BOXES



ROADRUNNER DOG BOXES ARE CUSTOM BUILT TO SUIT THE SIZE OF YOUR TRUCK OR UTE AND ARE PURPOSE-DESIGNED TO MEET YOUR REQUIREMENTS EXACTLY.

Dog boxes are created exactly to your specification. Historically we have manufactured dog boxes for flat deck or wellside utes as well as offered additional safety options including paw guards and ventilation hatches.

BENEFITS OF A ROADRUNNER DOG BOX

Customers are part of the build: Standard off-the-shelf dog boxes will likely not meet all of a customer's requirements and they will find themselves trying to make the 'best of it'.

Instead, Roadrunner can involve customers in the process throughout the whole journey to ensure their dog box is designed to meet current and future needs and that it will stand the test of time.

Multi-purpose: Dog boxes can be multi-purpose. Many standard off-the-shelf options cannot be tailored to exactly what you need from them. Roadrunner's dog boxes can also be used for storage and can be fitted and designed with flexibility in mind.

Compliant: Our boxes are compliant with all welfare regulations so customers are assured that animals are safe and will be comfortable in their surroundings.

Weatherproof: New Zealand's weather can be treacherous. It's important that dogs are transported safely and protected from the elements as much as possible. Our New Zealand made boxes are made with New Zealand conditions in mind.



Dog box for stock trucks



Get a quote or place order:
[www.roadrunnerltd.co.nz](http://www.roadrunnerltd.co.nz/custom-manufacturing/dog-boxes)
[/custom-manufacturing/dog-boxes](http://www.roadrunnerltd.co.nz/custom-manufacturing/dog-boxes)

RV STORAGE AND ACCESSORIES



UPGRADE YOUR MOTORHOME FOR THE ULTIMATE ADVENTURE

Maximise your RV's storage and functionality with custom-built solutions from Roadrunner. Whether you need additional storage, water tanks, bike racks, or completely unique modifications, we design and install high-quality aluminium additions to make your travels more convenient.

SOME OF OUR MOST POPULAR CUSTOMISATIONS INCLUDE:

Smart storage solutions - Custom aluminium boxes and compartments to keep your gear organised.

Water & fuel tanks - Built to fit your RV's specifications for extended journeys.

Bike racks & mounts - Securely transport bikes and outdoor equipment.

Custom brackets & fittings - Designed for maximum space efficiency and durability.

From clever storage solutions to fully integrated accessories, we can create whatever you need to enhance your motorhome.

BENEFITS OF ROADRUNNER RV STORAGE AND ACCESSORIES

Our custom storage solutions ensure that **every inch of your RV is used efficiently**, so you can carry everything you need without clutter.

They are designed with durability in mind, our aluminium accessories **withstand tough road conditions** and keep your gear secure on long journeys.

No need to settle for off-the-shelf solutions. We customise every storage box, tank, and fitting to **match your exact specifications**.

Aluminium construction keeps weight down while providing **strength and longevity**, making it the ideal material for RV storage and accessories.

Our products are **designed and manufactured in New Zealand** to handle local road and weather conditions, ensuring reliability wherever you travel.



Get a quote or place order:
www.roadrunnerltd.co.nz/custom-manufacturing/rv-storage-and-accessories

ATV/UTV CUSTOM STORAGE



ATV/UTV CUSTOM STORAGE SOLUTIONS

Built for the demands of farm, field, and job site use. Our custom ATV/UTV storage options are designed to keep your gear and animals secure, organised, and protected. We manufacture to your specs, ensuring a perfect fit for your vehicle and the way you work.

CUSTOM DOG BOXES

Durable, weather-resistant dog boxes built to handle tough conditions.

- Made to fit your ATV/UTV model
- Single or multi-compartment layouts
- Ventilation, drainage, and access doors included
- Optional divider panels and lockable doors
- Ideal for working dogs or recreational use. Designed for safety, comfort, and convenience on the move.

CUSTOM STORAGE TOOLBOXES

Secure storage for tools, equipment, and supplies.

- Custom-built to fit your tray or deck
- Heavy-duty aluminium or stainless construction
- Weather-sealed and lockable
- Internal shelving and compartment options
- Built to handle rough use and tough environments with smart, functional design.

BENEFITS OF ROADRUNNER ATV/UTV CUSTOM STORAGE

Maximise every millimeter: Custom fit designs mean no wasted space and smarter use of your ATV/UTV tray or deck.

Flexible design: From internal dividers to ventilation and locking systems, you get the features that matter most to you.

Consistent quality, every time: Our in-house team handles everything from design to fabrication, ensuring a reliable build on every finish.

Compliant: Our boxes are compliant with all welfare regulations so customers are assured that animals are safe and will be comfortable in their surroundings.

Need something different?

We can custom build almost anything to suit your ATV/UTV. Talk to us about a made-to-measure solution.



Get a quote or place order:
www.roadrunnerltd.co.nz/custom-manufacturing/custom-projects

POOL COVER BOXES



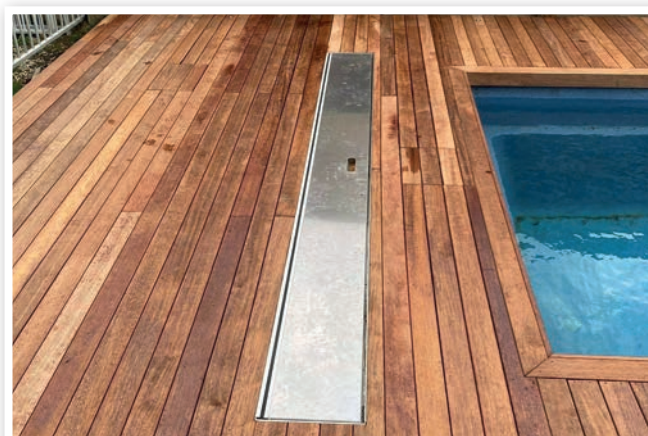
OUR EASY-TO-INSTALL STYLISH POOL COVER BOXES ADD VALUE TO EVERY POOL PURCHASE.

At Roadrunner Manufacturing, every Pool Cover Box is built to the specifications of your pool and designed to meet your requirements.

A Pool Cover Box will not only help to protect your pool cover and enhance longevity, but they also enhance the professional finish of your pool area, adding value to your pool asset and increase safety by reducing trip hazards.

STANDARD SPECIFICATIONS:

- Made up to size 410mm wide x 400mm high
- Made up between 2900mm & 4900mm long
- Sealed 3mm aluminium box construction
- Hinged lid with gas stays to hold open/closed
- Manual winding mechanism
- Winding mechanism and roller available on its own for fittings below decks/under stairs
- Stainless steel bearings and fixings
- Stainless steel crank handle
- 2:1 right angle gearbox



BENEFITS OF A ROADRUNNER POOL COVER BOX

Flexible design: They can be made to a custom or standard size.

Easy to use: Roadrunner Pool Cover Boxes are easy to use and have a simple winding handle – anyone can use them!

Customisable: With a range of finishing options available including powder coating.

Enhances safety: Your pool area safety is enhanced as there are no trip hazards.

Seamless integration: Our Pool Cover Boxes are designed to be recessed in ground or below decks to be flush with ground level.

Robust and New Zealand made: Each Pool Cover Box is New Zealand made, with New Zealand sourced components by trade professionals.



Get a quote or place order:

www.roadrunnerltd.co.nz

[/custom-manufacturing/pool-cover-boxes](http://www.roadrunnerltd.co.nz/custom-manufacturing/pool-cover-boxes)

PARTS & ACCESSORIES



ROADRUNNER CAN CUSTOM-MAKE AND SELL AN EXTENSIVE RANGE OF PARTS AND ACCESSORIES.

Fuel Caps	
PART #	DESCRIPTION
RRFCP	Roadrunner Non-Locking Fuel Cap Plain, 83.5mm ID
RRFCL	Roadrunner Locking Fuel Cap, 83.5mm ID
RRFCNL	Roadrunner Non-Locking Fuel Cap, 83.5mm ID
FCPLS	2" Plastic Locking Fuel Cap Small, 45mm OD
FCPNLS	2" Plastic Non-Locking Fuel Cap Small, 45mm OD
FCPL	3" Plastic Fuel Cap Locking, 65mm OD
FCPNL	3" Plastic Fuel Cap Non-Locking, 65mm OD
FCRS	Fuel Cap Rubber Seal (to fit Roadrunner caps)



FPTF1810



FPTF1025

Tank Top Filters	
PART #	DESCRIPTION
FPTF1025	Tank Top Filter 3 stud 1 1/4" BSP
FPTF1810	Tank Top Filter 4 stud 1 1/4" BSP

Replacement Hydraulic Filter Elements	
PART #	DESCRIPTION
TE53-3	Hydraulic Filter Element for 3 stud Filter - FPTF1025
TE53-4	Hydraulic Filter Element for 4 stud Filter - FPTF1810



TE53-3



TE53-4



Level Temperature Gauge

PART #	DESCRIPTION
FTLG5	5" Level Temp Gauge 12mm

Get a quote or place order:
[www.roadrunnerltd.co.nz/
 shop/parts-accessories](http://www.roadrunnerltd.co.nz/shop/parts-accessories)

POOL COVER BOXES - MADE TO ORDER

PARTS & ACCESSORIES

Filler Breathers

PART #	DESCRIPTION
FPPB2	Filler Breather Chrome Non-Locking
FPPB2L	Filler Breather Chrome Locking
FPPB3	Filler Breather Alloy Non-Locking



FPPB2



FPPB2L



FPPB3



GSA300



GSA400



GSA600

Gas Stays

PART #	DESCRIPTION
GSA100	Gas Stay 100mm Long
GSA300	Gas Stay 300mm Long
GSA400	Gas Stay 400mm Long
GSA500	Gas Stay 500mm Long
GSA600	Gas Stay 600mm Long

Licence Holders

PART #	DESCRIPTION
LH6	4" x 3" (100 x 75mm) Licence Holder - COF
LH7	6" x 4" (100 x 155mm) Licence Holder - VA
LH7-B	6" x 4" (100 x 155mm) Licence Holder (Blue) - VA
LH8	4" x 2" (100 x 60mm) Licence Holder - RUC
LH73	4" x 4" (100 X 100mm) Licence Holder - COF/RUC



LH6



LH7



LH7-B



LH8



LH73



LT1WSS



TBFL



L25ALF2



L72ALFZ



L3648

Latches

PART #	DESCRIPTION
LT1WSS	Stainless Steel T-Handle 1 Way Drop Latch
TBFL	Trigger Flush Latch
L20ALFZ	Anti-Luce M12 x 20mm Thread Length (Zinc Plated)
L25ALFZ	Anti-Luce M12 x 25mm Thread Length (Zinc Plated)
L72ALFZ	Anti-Luce M12 x 72mm Thread Length (Zinc Plated)
L3648	Hold Down Latch Padlockable (Zinc Plated)
L3648-SS	Hold Down Latch Padlockable (Stainless Steel)



BRACKETS & STRAPS

REPLACEMENT BRACKETS AND STRAPS AVAILABLE TO SUIT YOUR ROADRUNNER TANK OR TOOLBOX.

We have all the Bracket components you need to replace your existing mounting system or refurbish your project with a range of sizes or the ability to custom make to your requirements.

STANDARD SPECIFICATIONS:

- Brackets are manufactured from 6mm mild steel
- Brackets are supplied primed grey
- Straps are manufactured from 3mm polished stainless steel

BENEFITS OF ROADRUNNER BRACKETS AND STRAPS

Strong and Robust: Our Brackets and Straps are designed to meet New Zealand road requirements from a new one piece formed chassis.

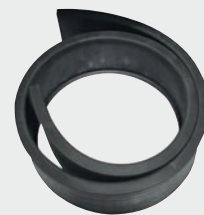
Blank mounting wings: Will better align with the mounting constraints of a pre punched chassis and allows the mounting height to be adjusted.

Easy replication: If you sustain damage through an accident or you are doing a refurbishment, a Roadrunner Bracket will fit with ease.

Roadrunner Brackets are already primed: Saving you time and money.

Value-add: A strong and robust design means added life and support for your tank to keep you working.

Custom Straps	
PART #	DESCRIPTION
FT52S	Tank Strap & Rubber, Straight to Straight, S/S (up to 1219mm Long)
FT52S-L	Tank Strap & Rubber, Straight to Straight, S/S (1220-2440mm Long)
FT54S	Tank Strap & Rubber, Eye to Straight, S/S (up to 1119mm Long)
FT54S-L	Tank Strap & Rubber, Eye to Straight, S/S (1120-2340mm Long)
FT56S	Tank Strap & Rubber, T Bar to Eye, S/S (up to 1019mm Long)
FT56S-L	Tank Strap & Rubber, T Bar to Eye, S/S (1020 to 2240mm Long)
FT57S	Tank Strap & Rubber, T Bar to T-Bar, S/S (up to 1019mm Long)
FT57S-L	Tank Strap & Rubber, T Bar to T-Bar, S/S (1020-2240mm Long)
FT58S	Tank Strap & Rubber, T Bar to Straight, S/S (up to 1119mm Long)
FT58S-L	Tank Strap & Rubber, T Bar to Straight, S/S (1120 to 2340mm Long)



FTBR50



FT52S

FT56S

FT57S

Get a quote or place order:
[www.roadrunnerltd.co.nz](http://www.roadrunnerltd.co.nz/shop/brackets-straps)
[/shop/brackets-straps](http://www.roadrunnerltd.co.nz/shop/brackets-straps)

Single Mount Brackets with S/S Straps	
PART #	DESCRIPTION
BHYTO100	Oval Square Single Mount Bracket 630H x 680D - Tanks 260-300mm Long
BHYTO120	Oval Square Single Mount Bracket 630H x 680D - Tanks 300-360mm Long
BHYTO140	Oval Square Single Mount Bracket 630H x 680D - Tanks 360-420mm Long
BHYTO160	Oval Square Single Mount Bracket 630H x 680D - Tanks 420-500mm Long
BHYTO100-1	Oval Square Single Mount Bracket 680H x 630D - Tanks 260-300mm Long
BHYTO120-1	Oval Square Single Mount Bracket 680H x 630D - Tanks 300-360mm Long
BHYTO140-1	Oval Square Single Mount Bracket 680H x 630D - Tanks 360-420mm Long
BHYTO160-1	Oval Square Single Mount Bracket 680H x 630D - Tanks 420-500mm Long
BHYTO100-2	Oval Square Single Mount Bracket 650H x 700D - Tanks 260-300mm Long
BHYTO120-2	Oval Square Single Mount Bracket 650H x 700D - Tanks 300-360mm Long
BHYTO140-2	Oval Square Single Mount Bracket 650H x 700D - Tanks 360-420mm Long
BHYTO160-2	Oval Square Single Mount Bracket 650H x 700D - Tanks 420-500mm Long
BHYTO100-3	Oval Square Single Mount Bracket 700H x 650D - Tanks 260-300mm Long
BHYTO120-3	Oval Square Single Mount Bracket 700H x 650D - Tanks 300-360mm Long
BHYTO140-3	Oval Square Single Mount Bracket 700H x 650D - Tanks 360-420mm Long
BHYTO160-3	Oval Square Single Mount Bracket 700H x 650D - Tanks 420-500mm Long
BHYTR80	Round Single Mount Bracket, Ø 635 - Tanks 260-350mm Long
BHYTR120	Round Single Mount Bracket, Ø 635 - Tanks 350-435mm Long
BHYTR140	Round Single Mount Bracket, Ø 635 - Tanks 435-500mm Long
HYTS-SM	Square Single Mount Bracket (Tank H + D, up to 1219mm Long)
HYTS-SM-L	Square Single Mount Bracket (Tank H + D, 1220-2440mm Long)

*Only suitable for tanks up to 500mm in length.

Standard Roadrunner Straps	
PART #	DESCRIPTION
RSTRAP-570	Ø 570 Round S/S Tank Strap & Rubber
RSTRAP-635	Ø 635 Round S/S Tank Strap & Rubber
RSTRAP-660	Ø 660 Round S/S Tank Strap & Rubber
RSTRAP-710	Ø 710 Round S/S Tank Strap & Rubber
OSSTRAP-1	Oval Square S/S Strap & Rubber - 630 x 680
OSSTRAP-2	Oval Square S/S Strap & Rubber - 650 x 700
SSTRAP-1	Square S/S Strap & Rubber (up to 1219mm Long)
SSTRAP-2	Square S/S Strap & Rubber (1220 - 2440mm Long)



BSOS



BSS



BSR-570

Mounting Brackets with S/S Strap

PART #	DESCRIPTION
BSOS	630H x 680D Oval Square Mounting Bracket
BSOS-1	680H x 630D Oval Square Mounting Bracket
BSOS-2	650H x 700D Oval Square Mounting Bracket
BSOS-3	700H x 650D Oval Square Mounting Bracket
BSR-570	Ø 570 Round Mounting Bracket
BSR-635	Ø 635 Round Mounting Bracket
BSR-660	Ø 660 Round Mounting Bracket
BSR-710	Ø 710 Round Mounting Bracket
BSS	Square Mounting Bracket (Tank H + D, up to 1219 mm Long)
BSS-L	Square Mounting Bracket (Tank H + D, 1220-2440mm Long)
BCRADLE380	Ø 380 Cradle Bracket and Strap - Primed
BCRADLE460	Ø 460 Cradle Bracket and Strap - Primed

*Tanks over 500mm in length require two mounting brackets & tanks over 1450mm in length require three mounting brackets.



HYTS-SM



BHYTO120



BHYTR120

Toolbox Brackets

PART #	DESCRIPTION
TB-BRAC	Toolbox Channel Bracket Pair - Primed, up to 600H x 600D x 1200mm Long
TB-BRAC1	Toolbox Channel Bracket - Primed, up to 600H x 600D x 500mm Long
TB-BRACEND	Toolbox End Bracket – Primed, 600H x 600D x 600mm Long



TB-BRACEND

CUSTOM MANUFACTURING



ROADRUNNER SPECIALISES IN UNIQUE, ONE-OFF FABRICATION PROJECTS AND NEW PRODUCT DEVELOPMENT. OUR TEAM CAN PRODUCE A WIDE RANGE OF CUSTOM ALUMINIUM PRODUCTS OUTSIDE OF THE USUAL SCOPES OF SIZE AND SHAPE, AND OUR PRECISION WATERJET CUTTERS ALLOW US TO WORK WITH ACCURACY ON COMPLEX DESIGNS.

If you've got a custom aluminium product in mind, we can help.

EXAMPLES OF PAST PROJECTS

- Stationary fuel storage tanks
- Aluminium steps
- Custom trailer fitouts
- Lockable gas bottle storage units
- Jet ski trailers with storage box
- Tail doors with grain hatches
- Garden art
- Toolbox with removable draws



Double roller door locker box with hidden water tank and dunnage cage.

BENEFITS OF ROADRUNNER CUSTOM MANUFACTURING

The option to customise means that instead of trying to make a standard product work to your needs and having to compromise on some of them, you can have a product that solves your problems and meets all the specs and needs that you have in mind.

Uniqueness of design: Everything is bespoke and tailored to exactly what you need. This means no surprises, no trying to make it work for a slightly different purpose, no sizing or specification challenges and a clear idea of the outcome, for peace of mind with every purchase.

Design is never compromised: Our quality assurance and confidentiality means that no one else can access or use your design (without your knowledge or permission). If you have a design that's innovative and specific to your company that you believe gives you a competitive advantage, you can be assured that this design will not feature in any other company's production line or finished products. We are respectful of that confidentiality and would never breach it.

Get a quote or place order:
[www.roadrunnerltd.co.nz/
custom-manufacturing](http://www.roadrunnerltd.co.nz/custom-manufacturing)



RECENT PROJECT EXAMPLES





BESPOKE ROADRUNNER FIT-OUT TAKES CM ENGINEERING'S MOBILE SERVICES TO THE NEXT LEVEL

Central Mobile (CM) Engineering is a prominent local player in the mobile engineering and mobile hydraulic hoses market, providing repair and manufacturing services. Located near Waipukurau, New Zealand, CM Engineering serves the agricultural community in the Central Hawke's Bay region. With a team of six engineers and two office staff, the company specialises in delivering a diverse range of mobile engineering solutions. CM Engineering's sister company, Pirtek Central Hawkes Bay (CHB), operates their hydraulic division.



CM Engineering recognised the need to expand their Pirtek CHB mobile service capabilities to meet the demands of the agricultural industry covering a significant land area. To achieve this, they required a larger, more versatile, and technologically advanced Mobile Service Unit (MSU) truck. The challenge was to find a fabrication partner capable of designing and building a customised truck body that could accommodate the necessary equipment, tools, and inventory, whilst presenting a professional image on the move.

In their search for a suitable fabrication partner, CM Engineering came across Roadrunner Manufacturing, a renowned company based in Bulls, New Zealand. Impressed by the quality and innovation showcased in Roadrunner's work, CM Engineering decided to collaborate with them on the development of their MSU truck.

According to Sam Barry, Owner and Qualified Engineer at CM Engineering ***"As heavy fabrication engineers ourselves, we came across their work and were really impressed with the quality of projects they were putting out, and although there were a few other ute body builders out there, none of them offered the size we aimed to achieve."***

The partnership began with a clear vision from CM Engineering. Sam provided initial sketches, sizes, and locations, and Keiran Jenkins at Roadrunner transformed these into detailed Computer Aided Designs (CAD). The design phase allowed both teams to collaborate effectively, refining the concepts to ensure that the MSU truck would perfectly suit CM Engineering's requirements.



Sam explains "I began by providing a basic sketch, outlining sizes and placements. They took that sketch and transformed it into a detailed CAD design, and our project evolved from that starting point. They handled the main structural fabrication, incorporating central locking and crafting three lift-up doors with gas struts. All the doors are equipped with individual locking mechanisms and switches, ensuring that closing a door automatically turns off the interior lights."

The new truck equipped with custom compartments and toolboxes.



The finished MSU truck showcasing its large storage capacity for the team's parts and tools required on a job.

The completion of the MSU truck project has had a significant positive impact on Pirtek CHB's operations. The newly designed 4WD truck with its custom-built body has enabled the company to cover a larger land area efficiently. The storage capacity, equipped with strategically placed compartments and toolboxes, has ensured that the team had all the necessary parts and tools readily available. This has not only improved service response times but also projected a professional image of the company whilst out on jobs.

Sam shares, ***"We can go to more sites. As a manager, I have more confidence that my staff can get to sites safely, get the job done effectively and have all the equipment available."***

One of the key things that sets Roadrunner Manufacturing apart from other fabricators was their ability to deliver highly customisable solutions. Sam emphasises,

" Their ability to customise a product that really suited our needs was second to none. "

Furthermore, the transparent and reliable communication, along with Roadrunner's commitment to meeting project timelines, made the collaboration smooth and productive. Sam remarks, ***"The fact that they could issue a quote and stick to it was awesome too, these days there are often blowouts of either cost and time and we didn't experience any of that with Roadrunner."***

Reflecting on the experience of working with Roadrunner Manufacturing, Sam had high praise for the team, particularly Keiran, stating, "It was a really straightforward experience. Keiran really understands lead times and the technical side of things. He's a really honest guy and I got a good vibe about them right from the start."





NOTES

[illegible]



53 Bridge Street, Bulls,
Manawatu, 4818
(06) 322 1575
info@roadrunnerltd.co.nz

www.roadrunnerltd.co.nz